

# A Legacy of Compassion



## Lenawee County Michigan's Ten-Year Plan To End Homelessness

*Beginning January 2007*

*Updates in 2008 are blue*

*July 2010 updates are in red*

### **The Vision of the Task Force is:**

*To Put Into Place a Plan to End Homelessness  
in Lenawee County, Michigan, by the year 2017*

The purpose of this plan is to put into place a mechanism to provide homeless persons with the necessary options that will lead to permanent housing. We understand that homelessness is a complex issue with no one simple solution. It is commonly accepted that while the existing homeless system works well for some persons, it has not been effective enough at permanently ending homelessness. We can no longer afford to cycle people through emergency housing and then back to the streets, only to endlessly repeat this pattern. However, Lenawee County's homeless system as it exists today does not effectively address the path to permanently house everyone who desires housing.

## **Members of the Task Force To End Homelessness in Lenawee County**

Catholic Charities  
Community Action Agency  
Concerned Citizens  
Department of Human Services  
Do' Chas II Counseling  
**Habitat for Humanity of Lenawee County**  
Homeless Education Programs of Lenawee County  
HOPE Community Center  
Family Counseling & Children's Services of Lenawee County  
Homeless and Formerly Homeless Persons  
Goodwill Industries of Southeastern Michigan, Inc.  
Government officials

- K. Z. Bolton, Lenawee County Commissioner
- Gary McDowell, Mayor of Adrian
- Jae Guetschow, Village President of Blissfield

Lenawee Community Mental Health Authority  
Lenawee Emergency and Affordable Housing Corporation  
The Salvation Army  
South Central Michigan Works!  
United States Department of Agriculture  
Veterans' Affairs Administration

**The Lead Agency:** The Lenawee County Continuum of Care (CoC) serves as Chair of the Partners for the development of a Ten-Year Plan to End Homelessness in Lenawee County and chairs the Advisory Board to End Homelessness in Lenawee County.

**Lead Contacts:** Jae Guetschow, Department of Human Services, Village President of Blissfield; Khristine Henson-Jones, Lenawee Emergency and Affordable Housing Corporation; Sharon Hudson, Family Counseling & Children's Services of Lenawee County.

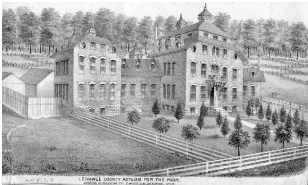
**Fiduciary Agency:** Family Counseling and Children's Services of Lenawee County  
**About Lenawee County, Michigan**

# **A Legacy of Compassion**

*Lenawee County has a long history of compassion for the less fortunate.*



Laura Smith Haviland was a tiny frontier woman who in the early 1830's helped to organize the first anti-slavery society in Michigan. Later she and husband Charles established the first station on the "Underground Railroad" in Michigan, helping escaped slaves slip through to Canada and freedom. After Charles' death in 1845, Laura intensified her involvement in the Underground Railroad. In 1846-47 she cleverly foiled the efforts of men from the south to return a family of escaped slaves to bondage. In their rage, the men placed a price of \$3,000 on the head of this tiny woman, dead or alive. She defied the offer, making repeated trips to Cincinnati, Ohio, to help escaped slaves. She even slipped into Kentucky, to assist slaves and to encourage an imprisoned abolitionist. She personally escorted some escapees all the way to Canada. A life-sized statue sits in front of the Adrian City Hall. (Lee M. Haines, 1977, *Laura Smith Haviland: A Woman's Life Work*)



The Lenawee County Asylum for the Poor: "On March 25, 1836, the board of supervisors purchased...land to be used for the purpose of establishing a poor-house in said County of Lenawee. The increase in the population in this locality, the incoming of new families, the infirmities of age and the unfortunate condition of some persons who had become a charge upon the public, led to the establishment of an institution within the county, to be maintained at public expense, called the

Infirmiry, ... as a home for aged, decrepit and indigent persons. Inmates who are able to work are employed on the farm, or in caring for stock and "choring" on the premises. Good, wholesome and substantial food is provided in abundance, as is also comfortable and seasonable clothing and volunteer ministers from various churches in the county supply the spiritual needs." (Source: [www.lenaweehistory.com](http://www.lenaweehistory.com), 8.2.2006)



While attending Hillsdale College 1865-1869, Lenawee County native Will Carleton visited the local poor farm. He sat in the house to talk with an old lady as to how she came to be in the home. She told him of her troubles and these became the basis of the poem "Over the Hill to the Poor-House." In 1904, Carleton wrote he had received many letters from superintendents of poor houses, after *Harper's Weekly* published the poem there was a "decrease in the number of inmates, occasioned by the withdrawal of old people, whose children were ashamed." In 1964,

a *Detroit Free Press* article stated that: "In awakening society to the inhumanities faced by countless older people, it helped create public demand for a social security program." (Source: Pamphlets provided by the Will Carleton Poorhouse.)



The Salvation Army began as the Christian Mission in London, England, in 1865. Amazingly, thirty-one years later it had touched the hearts of Lenawee County. The Salvation Army began its ministry in Adrian and to Lenawee County on January 16, 1896 under the leadership of Captain Thomas Bullock and Lieutenant John McGee at the Maumee Street Mission. Over the years, the Corps expanded programs and operated out

of several locations. It opened its doors at the present Church Street location in 1929. Currently the social ministry of The Salvation army extends emergency housing, clothing, community meals, and food to the homeless population, as well as spiritual guidance through the church. (Pamphlet)



The American Red Cross came to Lenawee County in 1917 as part of a mandate by Congress to provide relief to disaster victims and services to members of the U.S. armed forces. (Pamphlet)

desperate cries for was hired to One of the most established



In the early 1970's, Call Someone Concerned Inc., received countless help from women in violent relationships. In 1978, a program director develop and provide services specific to victims of domestic violence. pressing needs was a safe, confidential shelter. Volunteer homes were throughout the county. Additional space was rented to shelter one or two families needing intensive care. In 1983, a grant was presented by the City of Adrian to purchase and renovate a facility where more families could be sheltered and all domestic violence services could be consolidated into one place. In 1984, the facility officially became known as the Catherine Cobb Domestic

Violence Shelter. In 1990, the program became part of Family Counseling and Children's Services of Lenawee County. In 1992, services to homeless women were added. In March 2003, renovations were completed that doubled the number of clients that could be housed and served. (Pamphlet)



In the late 1980's, Lenawee County community leaders realized there were no programs targeting citizens in housing crisis. No one knew how many people were impacted by this lack of service, but the sense was that the numbers were growing with each year. As a result, the Basic Needs Task force, a branch of the Human Services Council, helped to create a Housing Task Force. In 1990, out of this need and in collaboration with the Adrian Dominican Sisters, Lenawee Emergency and Affordable Housing Corporation (LEAHC) was founded and later incorporated in 1991. LEAHC is a Michigan not-for-profit corporation providing emergency shelter, transitional housing, permanent housing and direct client assistance in the form of financial aid for past due and first months rent. (Pamphlet)

#### Share the Warmth

In January 2004, a group of caring individuals from the various churches in Lenawee County were very concerned about the increase in homelessness in the County. The group collaborated to find an answer to this growing problem. Volunteers were recruited from these interested churches and various church halls were used to shelter the homeless at night during the winter months. There was such a positive response to the initial project that this ministry continues to provide services each winter. **For the winter 2009, this group offered overnight accommodations from December through the end of April and it was hosted by The Salvation Army.**

#### Campaign To End Homelessness

In January 2006, the State of Michigan began to focus on the Campaign To End Homelessness. The Lenawee Community Collaborative initiated the effort to develop Lenawee County's Ten-Year Plan to End Homelessness. The Lenawee County Continuum of Care (CoC) created the Memorandum of Understanding. As a result, the newly formed Advisory Board to End Homelessness in Lenawee County is in the process of developing the vision of ending homelessness in the next ten years in this County and carrying that vision forward.

## Geographic Area

**Lenawee County Michigan** is in Southeastern Michigan. It is made up of 761 square miles of residential and farmland and is now considered to be "micropolitan." It includes:

- **Cities of:** Adrian, Hudson, Morenci, and Tecumseh.
- **Villages of:** Addison, Blissfield, Britton, Cement City (partially), Clayton, Clinton, Deerfield, Onsted and Manitou Beach-Devils Lake, CDP
- **Townships of:** Adrian Township, Blissfield Township, Cambridge Township, Clinton Township, Deerfield Township, Dover Township, Fairfield Township, Franklin Township, Franklin Township, Hudson Township, Macon Township, Madison Charter Township, Medina Township, Ogden Township, Palmyra Township, Raisin Township, Ridgeway Township, Riga Township, Rollin Township, Rome Township, Seneca Township, Tecumseh Township and Woodstock Township.

## Demographics

The following data is from Wikipedia® and was last modified on July 8, 2006.

"As of 2003, the estimated **population** was 101,786. According to the 2000 U.S. Census there were 98,890 people, 35,930 households, and 26,049 families residing in the county.

The **racial makeup** of the county was

- o 92.51% White
- o 2.12% Black or African American
- o 0.41% Native American

- o 0.46% Asian
- o 0.01% Pacific Islander
- o 3.01% from other races
- o 1.49% from two or more races
- o 6.96% of the population was Hispanic or Latino of any race.

There were 35,930 **households** out of which:

- o 34.20% had children under the age of 18 living with them
- o 58.70% were married couples living together
- o 10% had a female householder with no husband present and 27.50% were non-families
- o 22.90% of all households were made up of individuals
- o 9.7% had someone living alone who was 65 years of age or older.

The average household size was 2.61 and the average family size was 3.07.”

The **median income** for a household in the county was:

- o \$45,739
- o The median income for a family was \$53,661
- o Males had a median income of \$38,458 versus \$25,510 for females.
- o The per capita income for the county was \$20,186

Approximately 4.40% of families and 6.70% of the population were below the poverty line

- o 7.10% of those under age 18
- o 9.20% of those aged 65 or over.

According to a September 4, 2006, ABC News report, the gap between the highest and lowest income Americans is widening. The top one fifth of the American population have half of all income. The Net Worth of 30 percent of the population is less than \$10,000. In 2000, the richest one percent of the people had more money after taxes than the bottom 40%. In 2000, the top 1% earned an average of \$862,700 after taxes, a 201 percent increase since 1979. This compares to the bottom 40 percent who earned an average of \$18,695 in 1979, which increased by 13 percent to \$21,118 in 2000.

According to statistics for Lenawee County, the jobless rate this year hit a high of 8 percent in February and 8.1 percent in March before improving to 6.3 percent in May and rising in June to 6.8 percent, the latest figure available. The Lenawee County jobless rate was 6.5 percent in June a year ago and an average 6.9 percent for all of 2005. According to the statistics, the estimated number of unemployed workers in the county seeking jobs declined from 4,038 in March to 3,431 in June. (Daily Telegram, 8.25.2006)

Unemployment in Lenawee County remains close to the statewide rate, which rose from 6.3 percent in June to 7 percent in July, according to the Michigan Department of Labor and Economic Growth. The rate was slightly above the 6.7 percent reported for July 2005. Michigan’s rate remained above the national unemployment rate of 4.8 percent. (Daily Telegram, 8.25.2006)

## Major Employers

- |   |   |
|---|---|
| <ul style="list-style-type: none"> <li>➤ Promedica</li> <li>➤ Wacker GE</li> <li>➤ State of Michigan</li> <li>➤ County of Lenawee</li> <li>➤ Lenawee County School Districts</li> <li>➤ Merillat Industries – closed manufacturing in 09</li> <li>➤ Siena Heights University</li> </ul> | <ul style="list-style-type: none"> <li>L &amp; W Engineering</li> <li>Delphi</li> <li>Venchurs/Nuestro</li> <li>Lenawee Stamping Corporation</li> <li>Brazeway – closed manufacturing in 09</li> <li>Blissfield Manufacturing</li> <li>Inergy Automotive Systems</li> </ul> |
|---|---|

- First Federal Bank
- Meijer
- United Bank and Trust
- Wal-Mart

- Jackson Community College (Lenawee Site)
- Adrian College
- Gus Harrison Correctional Facilities
- A host of agriculture related entities

## Housing

The Environmental Scan of Lenawee County, December 2003 completed by the Lenawee United Way and Volunteer Center:

There are 39,769 housing units in 2000 of which:

- 35,930 were occupied, of these 1,911 were for seasonal recreation or occasional use
- 3,839 were unoccupied
- 131 lacked complete kitchen facilities
- 218 lacked complete plumbing facilities
- 1,688 lacked telephones.

The median rent in Lenawee County increased 64% from 1990 to 2000, while the median owner-occupied home value increased 103%. The median owner-occupied home value in 2000 was \$109,500. In 2002, 1,051 homes were sold in Lenawee County with an average price of \$135,556.

The “fair market” rent in Lenawee County is \$647 for a two-bedroom unit. Fair market rent is the amount used by the U.S. Department of Housing and Urban Development to determine eligibility for the Federal Housing Assistance Payments Program. The figure is among the highest in the state. (At minimum wage of \$6.95 an hour a person has to work approximately 93 hours a month just to pay the rent). As of July 2003, there were 2,145 rental units in apartment complexes in Lenawee County: 841 one-bedroom units, 876 two-bedroom units, 206 three-bedroom units, 12 four-bedroom units and 210 studios. Seven complexes are targeted towards seniors, while another five complexes have more than 50% senior occupancy. Government-sponsored affordable housing programs assist about half of the complexes; these have an average occupancy of 90%. The average cost of a two-bedroom apartment in Lenawee County is \$750 per month. Currently, the waiting list for subsidized housing is approximately 2 years in Lenawee County.

# Defining the Need

## *Definitions of Homelessness*

**The Advisory Board To End Homelessness in Lenawee County Defines *Homelessness* as:** staying in a place not meant for permanent human habitation, in an emergency shelter, in transitional housing or temporarily doubled up with others due to lack of economic means or lack of affordable housing.

**HUD** definitions of Homelessness include:

- “*Chronically homeless person*: an unaccompanied homeless individual with a disabling condition who has either been continuously homeless for a year or more or has had at least four episodes of homelessness in the past three years. A disabling condition is defined as “a diagnosable substance use disorder, serious mental illness, developmental disability, or chronic physical illness or disability, including the co-occurrence of two or more of these conditions.” In defining the chronically homeless, the term “homeless” means “a person sleeping in a place not meant for human habitation (e.g., living on the streets) or in an emergency homeless shelter.
- *Homeless Person* means a person sleeping in a place not meant for human habitation or in an emergency shelter.”

## Some of the Cost of Homelessness

Though the total cost is incalculable, the following are some of the costs to area agencies serving homeless persons for the **2007 calendar year**:

Catherine Cobb Domestic Violence Shelter: \$457,142

Lenawee Emergency and Affordable Housing Corporation (LEAHC): \$272,557

The Salvation Army: \$254,000

The Daily Bread: \$160,000

Homeless Education Program: \$148,000

Promise Project: \$7,000

Share the Warmth: \$1,100

**Total: \$1,299,799**

## The Homeless of Lenawee County, Michigan

The exact number of homeless in Lenawee County, Michigan, has been difficult to determine. However, there are three Point-In-Time counts data for review.

2005

On January 25, 2005, 75 individuals were counted as homeless; of those 24 identified themselves as Couch Homeless.

### HUD Homeless

**HUD Homeless Individuals = 51**

- 38 females
- 13 males

**Average age of individual: 31**

- Youngest adult was 17
- Oldest was 61

**Length of homelessness: 15 months**

- Shortest period was 1 day
- Longest 10 years

**Number of times homeless: 2.33**

**Homeless Children:** An average of 2 children with each adult

**Current living environment:** Car, Woods, Motel

**Reasons given for being homeless:** 11 were victims of domestic violence, 5 were chronic substance abusers, and 7 were youth

### Couch Homeless

**Couch Homeless = 24**

16 females

8 males

**Average age of individual: 29**

Youngest adult age was 17

Oldest was 54

**Length of homelessness: 9 months**

Shortest period was 1 month

Longest was 6 years

**Number of homeless episodes: 2.24**

**Number of children:** An average of 2 children with each adult

**Where do they stay?** Family and Friends

**Reasons for homelessness:** 11 were youth, 2 were victims of domestic violence, and 2 were discharged from jail

### **Self- identified reasons for homelessness included**

Domestic Violence	Lack of Jobs/Unemployment	Had to move (evicted, kicked out)
Separated from spouse	Lack of Income	Business closing
In Debt	Parents Incarcerated	Fight with Family
Released from Maurice Spear	Disabled/Chronic Illness	Sexual Abuse

## 2007

On January 25, 2007, the Lenawee County Continuum of Care conducted another Point In Time Count of the homeless and defined Homelessness to include couch homeless. **Total = 239**

**Total Lenawee County Homeless = 239**

- Adults = 179
- Children = 19
- Unknown = 41

**Clients within a Family = 146**

- Adults = 100
- Children = 5
- Unknown = 41

**Clients who are Single = 93**



- Adults = 79
- Children (Youth) = 14

Total HUD Homeless = 93. Homeless Subpopulations as defined by HUD defined.

	<b>Sheltered</b>	<b>Unsheltered</b>
<b>Chronically Homeless</b>	19	1
<b>Severely Mentally Ill</b>	10	**
<b>Chronic Substance Abuse</b>	20	**
<b>Veterans</b>	3	**
<b>Persons with HIV/AIDS</b>	0	**
<b>Victims of Domestic Violence</b>	18	**
<b>Unaccompanied Youth (Under 18)</b>	27	**

\*\* HUD does not want unsheltered numbers for subpopulations, exception is Chronically Homeless.

## **2009**

On January 28, 2009, the Lenawee County Continuum of Care conducted another Point In Time Count of the homeless and defined Homelessness to include couch homeless. **Total = 229**

**Note:** On the day of the Point In Time Count there was very limited transportation available (bus lines were shut-down) because of winter weather, which significantly impacted an accurate count.

**Total Lenawee County Homeless = 229**

- Adults = 116
- Children = 113

**Clients within a Family = 161**

- Adults = 54
- Children = 107

**Clients who are Single = 68**

- Adults = 62
- Children (Youth) = 6

Total HUD Homeless = 114. Homeless Subpopulations as defined by HUD.

	<b>Sheltered</b>	<b>Unsheltered</b>
<b>Chronically Homeless</b>	11	**
<b>Severely Mentally Ill</b>	14	**
<b>Chronic Substance Abuse</b>	13	**
<b>Veterans</b>	3	**
<b>Persons with HIV/AIDS</b>	0	**
<b>Victims of Domestic Violence</b>	21	**
<b>Unaccompanied Youth (Under 18)</b>	8	**

# Resources in Lenawee County, Michigan

While a majority of the area's agencies are represented, this section is not to be construed as the only resources available. This section is an evolving product as new resources are identified.

[Adrian REA Literacy Center](#) – Provides quality literacy programs in a welcoming environment for adults. Located at Adrian Dominican Sisters, 1257 E. Siena Heights Drive, Adrian. Phone: 517-266-4260.

[The American Red Cross\\*](#): Services for Natural Disasters, there are national guidelines for services provided. For Personal Disasters, for personal disasters they can provide 3-night stay in a motel. Provides communications and welfare services to the military. Distribution of personal hygiene kits no longer as of 2010. Located at: 204 N. Broad St., Adrian. Phone: 517-263-1904.

[Catherine Cobb Domestic Violence Shelter\\*](#): Provides emergency shelter for women and accompanied children under the age of 18 who are victims of domestic violence and/or homeless. Stay may be up to 45 days, services include: case management, support groups, legal advocacy, community education, 24-hour crisis hotline, and First Response Team. Located at 225 N. Main St., Adrian. Phone: 517-265-6776.

[Catholic Charities of Lenawee](#): Counseling, substance abuse treatment, **foster care and adoption services. Oversees Roadmap to Graduation program.** Located at: 199 N. Broad St., Adrian. Phone: 517-263-2191.

[Child Care Network](#): Referrals to licensed childcare in Lenawee County. Located in the Human Services Building 1040 S. Winter St. Suite 2020, Adrian. Phone: 517-264-5324.

[Community Action Agency of Lenawee County](#): Adult literacy program, WIC, Neighborhood development, Dispute resolution, RCAP-Safe water, **Lenawee Medical Clinic no longer available as of 2008**, Migrant Outreach Services, Michigan Saves, Financial Literacy/Credit & Budget Counseling, Income Tax Assistance, Emergency Services-one-time services in the areas of food, prescriptions or transportation to qualified participants, **Foreclosure and utility assistance, Weatherization.** Located at: 400 W. South St., Adrian. Phone: 517-263-7861.

[The Daily Bread of Lenawee Soup Kitchen](#): See information under Food Assistance.

[Damascus Road](#): Provides used furniture to Lenawee County residents who are coming out of homelessness or out of prison. Located at 301 S. Tecumseh, Adrian. Phone: 517-265-1900.

[Do'Chas II Counseling](#): Counseling and prevention. Main office The Blake Building, 180 W. Michigan Ave., Suite 403, Jackson, MI. Phone numbers: Main (517) 788-4605, Cell (517) 902-4006, Youth Runaway Line (800) 292-4517, Parent Help Line (800) 942-4357.

[Early Head Start](#): Provides pregnant moms, infants, toddlers and 3-4 year olds with guidance, literacy, development practices and much more. Phone: 517-263-1118.

[Faith Community](#): There are nearly 200 churches with many providing services such as: food pantries, volunteers, prison ministries, managing apartments for low-income families, clothing, financial assistance, mentors, blankets, etc.

[Family Medical Clinic](#): Provides health and dental services for the uninsured and Medicaid recipients. Located at 227 Riverside Ave., Adrian. Phone: 517-263-1800.

[Family Counseling and Children's Services of Lenawee County](#): Counseling, foster care, adoption, and the Catherine Cobb Services as well. **Happy Moms/Healthy Babies no longer available as of 2008.** Located at: 220 N. Main St, Adrian. Phone: 517-265-5352.

Goodwill Industries of Southeastern Michigan, Inc.: Employment services, Workers on Wheels, Homeless Youth and MPRI programs available. 1357 Division Street, Adrian. Phone: 517-263-2135.

Habitat for Humanity: Houses built or renovated with volunteer help and sweat equity then sold to those in need for no profit and with no interest charged. Located at 1205 E. Beecher, Adrian. Phone: 517-265-6157.

Hope House: Provides supportive, controlled, transitional living residence for men with alcohol or drug related problems. Located in Jonesville, Michigan. Phone: 517-849-2330.

Legacy Housing Apartments: Permanent supportive housing apartments for seven chronically homeless individuals located at 223 N. Broad Street, Adrian. Owned by Lenawee Housing Development Coalition.

Lenawee Community Mental Health Authority: Provides mental health services including emergency mental health services, person centered planning, medication management, psychiatric hospital services, psychiatric evaluation, supports coordination, substance abuse referrals and more, for those who qualify. Located in the Human Services Building, 1040 S. Winter St., Suite 1022, Adrian. Phone: 517-263-8905 or (800) 664-5005.

Lenawee County Department of Human Services: Provides financial help, limited medical coverage, a food assistance program, foster care, adoption, and protective services. Located in the Human Services Building, 1040 S. Winter St., Suite 3010, Adrian. Phone: 517-264-6300.

Lenawee County Department on Aging: Provides seven Senior Centers and offer activities and nutritious meals to adults over the age of 60. The Department can assist older adults in finding and utilizing resources in our area. The Social Worker can act as an advocate for older persons seeking assistance and also provide information and/or referral to a broad range of resources. Located in the Human Services Building, 1040 S. Winter St., Suite 3003, Adrian. Phone: 517-264-5280.

Lenawee County Mission\*: This faith based agency includes 10 shelter beds for homeless men for night only and a substance abuse recovery program for men for up to 2 years. Located at 227 N. Broad St., Adrian. Phone: 517-265-4019.

Lenawee Emergency and Affordable Housing Corporation\*: Provides a Housing First program that includes case management and possible financial assistance for rent or mortgage, an Emergency Shelter program for families and individuals, Transitional Housing for families with children and a Permanent Housing program. Office is located at: 307 E. Church St., Adrian. Phone: 517-264-0782.

Lenawee Great Start: Provides community resources and family support to help kids from birth to age five succeed in school and life. Phone: 517-424-1000.

Lenawee Housing Development Coalition: Owns Lenawee County's only permanent supportive housing program; Legacy Housing, which provides permanent housing for seven chronically homeless individuals.

Life Challenge: Provides one-year residential Christian growth program for men and women with life-controlling problems. Phone: 517-437-0077.

Lighthouse Inn\*: This agency closed January 2008.

Ozone House\*: Provides free confidential and voluntary help for teens in crisis and their families. Located in Washtenaw County.

Promise Project\*: No longer available as of 2009.

Re-Entry After Prison Program: No longer in service as of 2008.

Roadmap to Graduation\* – Program for senior high school students who are homeless but on track to graduate. Contact Catholic Charities located at: 199 N. Broad St., Adrian. Phone: 517-263-2191.

Rural Development\*: Provides homeless prevention options for those outside of city limits by financing homes with subsidized loans, preventing foreclosure through refinancing with the same subsidized loan program, and providing leases on inventory properties to agencies such as LEAHC for emergency or transitional housing. Phone: 810-230-8766.

Saint Mary’s Catholic Church, Adrian\*: This group provides financial support for hotel, food bank. Located at 305 Division St., Adrian. Phone: 517-263-4681.

The Salvation Army\*: The Salvation Army extends emergency housing, clothing, community meals and food to the homeless population, as well as spiritual guidance through the church. Located at: 217 W. Church St., Adrian. Phone: 265-2038.

Service Groups: Numerous service clubs provide volunteer efforts and funding for a variety of community services such as food and clothing.

Share the Warmth\*: This service includes seasonal beds for homeless men and women during the winter months and is staffed by volunteers from the faith-based community. Hosted by The Salvation Army, 217 W. Church Street, Adrian. 517-265-2038.

South Central MI Works!: Provides advocacy, employment search assistance. **Housing case management no longer available as of 2009.** Located in the Human Services Building, 1040 S. Winter St. Suite 1014, Adrian. Phone: 517-266-5627.

Telamon\*: Provides year around services for the Migrant population, which includes a summer Head Start for Migrant children. Located in the Human Services Building, 1040 S. Winter St. Suite 1014, Adrian. Phone: 517-266-2634.

Veterans Affairs\*: Provides assistance with mortgage, rent and utility arrearages once every 2 years for a veteran or the spouse or unmarried widow of a veteran. Veteran’s homes are located in Grand Rapids, Monroe or Marquette. The local VA is housed in the Human Services Building, 1040 S. Winter St. Suite 2023, Adrian. Phone: 517-264-5335.

**\*Indicates housing services**

## **LENAWEE COUNTY FOOD ASSISTANCE**

### **Addison**

**Addison United Church Emergency Food Pantry**  
202 S. Talbot St., Addison, MI 49220, 517-547-5527 or 517-547-7577

Serving Addison area, on the last Thursday of the month from 3 - 5 p.m. or in case of emergency

Manitou Road Baptist Church

175 Manitou, Manitou Beach, MI 48253, 517-547-5516

Distributed second Thursday of each month to those in need, please contact the church

St. Mary's Church on the Lake

450 Manitou Road, Manitou Beach, MI 49253, 517-547-7496

Serving nearby community every Friday from 11a.m. to 1p.m. – only once every 30 days.

**Adrian**

Adrian First Church of the Nazarene

50 Industrial Drive, Adrian, MI 49221, 517-263-1579

Food pantry open Monday – Friday, 9 a.m. to 3 p.m.

Fishes and Loaves

410 E. Maumee Street, Adrian, MI 49221, 517-759-4421

Food pantry - call for appointment. Proof of residency and income is necessary.

The Daily Bread

302 S. Tecumseh St., Adrian, MI 49221, 517-266-0937

Serves meals on Tuesday, Thursday, Friday, Saturday, and Sunday from 11:30 a.m. – 2:30 p.m.

Food pantry open Tuesday and Friday from noon to 2 p.m.

Tecumseh Church of Nazarene

1001 N. Union St., Tecumseh, MI 49286, 517-423-4960

Food pantry open Monday from 10 a.m. to 2 p.m.

Saint Mary's Catholic Church

Erie St., Adrian, MI 49221 (in back of church), 517-266-0378

Food pantry open Monday, Tuesday, Thursday from 1 - 3 p.m.

Saint Vincent's DePaul Society, St. Joseph Church

415 Ormsby St., Adrian, MI 49221, 517-266-7611

Open Monday, Wednesday and Friday from 1 - 2:30 p.m.

The Salvation Army

217 W. Church St., Adrian, MI 49221, 517-265-2038

Serves hot meals on Mondays and Wednesdays from 4 - 5 p.m.

Food pantry walk in times Monday through Friday, 8:30 a.m. – 12:00 p.m.

**Blissfield**

St Paul's Evangelical Lutheran Church ELCA

306 East Jefferson Street, Blissfield, MI 49228, 517-486-6464

Monday – Friday 9 a.m. -12 p.m. or by appt.

Eligibility: once a month for 3 months then 3 month waiting period before eligible again.

Ideally client would have children under 18 yrs. of age in the home but each case is evaluated.

**Britton**

Britton Bethal Baptist Church

296 s. Main Street, Britton, MI 49229, 517-451-9921

General distribution is the 3<sup>rd</sup> Thursday of each month from 2:30 – 4:30 p.m.

Open to Britton-Macon school district residents.

### **Brooklyn**

#### Community Christian Interfaith Support

Brooklyn Products Building, 171 Wampplers Lake Road, Brooklyn, MI 49230, 517-592-3947  
Business hours Tuesday and Thursday from 10 a.m. to 2 p.m. Residency identification is needed.

### **Clinton**

#### Clinton Community Food Bank at Clinton United Methodist Church

10990 Clinton Tecumseh Road, Clinton, MI 49236, 517-456-4972  
Food pantry available second Thursday of each month or in the event of an emergency.

#### Solid Rock Church of Lenawee

112 East Church Street, Clinton, MI 49236, 517-456-7939  
Food pantry available third Thursday of each month from 5 – 7 p.m.

### **Deerfield**

#### St. Alphonsus Catholic Church

222 Carey Street, Deerfield, MI 49238, 517-447-3500  
Food pantry available Wednesday from 2 – 4 p.m. or by appointment

### **Hudson**

#### Sacred Heart Catholic Church

Sponsored by Hudson Ministry Association  
207 S. Market St., Hudson, MI 49247, 517-448-3811  
Business hours Tuesday and Thursday from 11 a.m. – 1 p.m.

### **Morenci**

#### Morenci Food Pantry

751 N. Summit Street, Morenci, MI 49256, 517-458-7195  
Food pantry available third Thursday from 8 a.m. – noon.  
Must show Morenci zip code identification.

### **Tecumseh**

#### SPEC Community Foundation, Inc.

(St Peters Episcopal Church)  
313 N. Evans Street, Tecumseh, MI 49286, 517-423-3780  
Call for an appointment

#### Dinners On Us – God’s Bread Basket

Church of Christ, 312 W. Chicago Blvd. Tecumseh, MI 49286  
Serving hot meals on Tuesday, Wednesday, and Thursday evenings from 6 – 7:30 p.m.

### **Angel Food Ministries**

[www.angelfoodministries.com](http://www.angelfoodministries.com)

### **Great Food for All**

First Presbyterian Church of Tecumseh, 211 W. Chicago Blvd., Tecumseh, MI 49286, 517-423-3470

First Church of the Nazarene, 50 Industrial Drive, Adrian, MI 49221, 517-263-1579

# **Guiding Principles of the Memorandum of Understanding Of Michigan's Campaign To End Homelessness**

All Partners and the Lenawee County community at large will work together in detailing a Ten-year plan to end homelessness in this county. The Lenawee County community, which already has an extensive history of collaboration and a commitment to ending homelessness, will be involved and encouraged to actively participate in all processes of the creation and implementation of this plan. As part of the Ten-year plan to end homelessness, all Partners and community participants make a commitment to:

- 1) Provide permanent, safe, affordable housing that is available for all individuals and families;
- 2) Ensure Homeless individuals and families receive safe, temporary shelter with planning for permanent housing that begins immediately;
- 3) Protect all people, including those who are homeless, against discrimination because of race, color, religion, sex, handicap, familial status or national origin;
- 4) Ensure all people, including those who are homeless, will be treated with respect, that individual needs and choices will be affirmed, and self-determination and autonomy will be promoted;
- 5) Promote successful, long-term outcomes for individuals and families who are, or who may become homeless;
- 6) Develop and provide a coordinated homeless prevention system that will be designed and delivered in a manner that is accessible and acceptable to all people who are disadvantaged or marginalized and will include those housed in emergency shelters or temporary living arrangements;
- 7) Develop and provide a Housing First System, which will also be designed and delivered in a manner that is accessible and acceptable to all people who are disadvantaged or marginalized and will include those housed in emergency shelters or temporary living arrangements;
- 8) Streamline service links and eliminate barriers to ensure all people have access to services available;
- 9) Develop multiple strategies to assist the homeless with the philosophy and understanding that no one strategy can help all individuals and families;
- 10) Provide active outreach for people who are labeled "difficult to reach"
- 11) Strive to create permanent supportive housing with financial resources allocated with this in mind;
- 12) Utilize ideas and expertise of homeless or formerly homeless individuals in the creation and implementation of the Ten-year plan;
- 13) Affirm that the role of the Partners' Advisory Board will include system change activities such as advocacy, attempting to revise institutional policies and practices, and proposing policy and legislative amendments, as well as education professionals, funders and other stakeholders on the issues related to homelessness and permanent supportive housing;
- 14) Attend all applicable Technical Assistance Sessions related to this Ten-year plan;
- 15) Attend and participate in Michigan's Affordable Housing Conference and roundtable in June 2006.

# Strengths & Challenges

On July 12, 2006, the members of the Advisory Board to End Homelessness in Lenawee County met and identified the strengths and challenges of the county noted below with updates in blue for 2008 and red for 2010.

## *Strengths*

- There is a great deal of collaboration among the agencies and groups in the county. This helps ensure assistance for many homeless persons and avoids duplication of services.
- There are many emergency shelter options.
- We have a caring community that gives of their time and money.
- Several local foundations provide funding for services.
- Many area organizations, agencies, etc., provide food and clothing.
- Adrian College, Siena Heights University and Jackson Community College provide board members, staff, interns, volunteers, and facilities.
- **Federal Qualified Health Center is available to address Medicaid clients & the uninsured.**
- **Lenawee Economic Development Center.**
- **Permanent Support Housing available in 2010.**
- **Homeless Assistance Recovery Program (HAPR) vouchers available in 2008 and 2010.**
- **Tutor available for emergency shelter children and youth as of 2010.**
- **In 2009, the addition of American Recovery and Reinvestment Act (ARRA) monies.**

## *Challenges*

- Rising housing cost and the lack of affordability.
- Lack of transportation, especially for persons outside the city limits of Adrian.
- Lack of medical care; including health and dental facilities that accept Medicaid.
- Unemployment is on the rise – **as of March 2010 it was 17.4%.**
- Decline in the number of students graduating from High School.
- Drugs: the use and creation of Meth is on the increase.
- Domestic Violence charges do not lead to trial or conviction in over 95% of cases. The County leads the state in mutual arrests.
- Foundations have lost local involvement and now their priorities have moved outside the community.
- Funding is flat or has decreased and more organizations are vying for those same dollars.
- Organizations have limited fundraising resources and/or expertise.
- No youth shelter exists in the county.
- There are inadequate family shelters. **LEAHC added one family shelter in 2009. Lenawee County now has two.**
- Parent incarceration with little legal planning for minor children creates homelessness.
- There is a generalized lack of awareness of the problem of homelessness.
- Those that are homeless often are unaware of the resources available.
- **Homeless Management Information System (HMIS) – lack of agency participation and data entry.**
- **Current Economy (gas prices & transportation, utilities, food prices, etc.).**
- **Foreclosure rates.**
- **Sex offenders (CSC) – lack of resources to serve this population.**
- **Youth homelessness has increased 23% in 2009-2010.**
- **Huge increase in need for mental illness counseling with clients who have no insurance and need sliding fee scales.**



# Planning Process, Procedure, & Explanation

The Advisory Board to End Homelessness in Lenawee County determined that there will be no final solutions; the process of ending homelessness in Lenawee County will continue to evolve and change over the next ten years and beyond. From the identified challenges, ideas of where to begin were created and they include:

1. *Increase the capacity to track the extent of homelessness in Lenawee County, therefore having current date on the homeless population in Lenawee County to be used to obtain grants, increase awareness, etc.*

- **Point In Time Homeless Count January 2007** and then at least every 2 years.  
The CoC will facilitate the count. Incentives will be obtained and distributed for participation in the count. The CoC will compile and disseminate the data to the appropriate entities. This will be repeated at least every 2 years thereafter.
- **Glean information from HMIS.**  
All homeless service providers will participate in utilizing HMIS. The CoC will create a method to glean unduplicated information from HMIS. The CoC will compile the data and disseminate a report to the appropriate entities yearly.

2. *All individuals and families should have permanent, safe, affordable housing.*

- **Ensure an adequate supply of Permanent, Safe, Affordable Housing that is available for all individuals and families:** An absolutely necessary requirement for ending homelessness is having an adequate supply of affordable housing. MSHDA defines Affordable housing as 75% of monthly income.
- **Mobilize the resources of** for-profits, non-profits, government, faith based community, etc to assist in obtaining funding.
- **Assist homeless persons that are excluded from accessing housing:** Certain groups are excluded from accessing housing due to mental illness, substance abuse, functional deficiencies, finances, evictions, domestic violence, criminal history; credit history, lack of marketable employment skills, lack of education/illiterate, lack of identification, no drivers license, multi-generational related households, large families, unrelated person households and these obstacles must be overcome.
- **Build on the existing network** of problem solving relationships among providers, funding sources, property owners, government entities and advocates so that providers of services, property owners and government entities will be able to more easily assist clients to receive necessary services easily.

3. *Homeless individuals and families should receive safe, temporary shelter with planning for permanent housing that begins immediately by implementing multiple strategies as no one strategy can help all homeless persons*

- **Housing First:** The goal of “Housing First” is to immediately house people who are homeless. Housing comes first no matter what is going on in one’s life, and the housing is flexible and independent so that people are housed easily and stay housed. The “Housing First” methodology will provide a critical link between the emergency shelter/transitional housing systems and the community-based and governmental services and resources that are often difficult to access or simply not available to homeless persons trying to attain stability and independence in permanent housing. Housing First is implemented through four primary stages:
  - **Crisis Intervention and Short-Term Stabilization:** This phase includes helping families access emergency shelter services and/or short-term transitional housing and address crisis needs.

- **Screening, Intake and Needs Assessment:** The “Needs Assessment” results in an action plan for clients, which includes short- and long-term goals and objectives with concrete action steps. This can occur immediately or after families are stabilized in emergency services.
- **Provision of Housing Resources:** After the completion of screening and assessment, the next phase involves assisting families in moving into permanent, affordable housing in a safe neighborhood. This is accomplished by helping them overcome various barriers to obtaining permanent housing.
- **Provision of Case Management:** Before the move into permanent housing, case management services help to identify clients’ needs and to ensure individuals and families have sources of income through employment and/or public benefits. After the move, time-limited case management services focuses on helping families solve problems that may arise and to connect individuals and families with community services to meet longer-term needs.

While acknowledging and addressing the personal factors that contribute to family homelessness, the housing first methodology was designed to more effectively address the economic root causes of the problem: poverty and the lack of affordable housing. The program provides a critical link between the emergency/transitional housing system and the community-based social services, educational and health care organizations that bring about neighborhood integration and family self-sufficiency.

The Approach deals with the interrelated problems that homeless families face: poverty, economic development, social infrastructure and housing. Services are provided in an integrated, holistic manner to place families, not only back into housing, but also into communities. It involves them in economic and social services after they are stabilized in permanent housing and are no longer traumatized by the crisis of homelessness.

Central to the effectiveness of housing first is the concept that empowerment helps clients identify their own needs, recognize the choices they have, create options for themselves and plan strategies for permanent change in their lives.

Evolving in an era of shrinking resources, the housing first approach places great emphasis on reducing duplication of effort and maximizing the effectiveness of community resources. By situating homeless individuals within the larger community, the program fosters human connection. The methodology is a cost-effective model that coordinates many existing systems and services, rather than creating new ones.

- **Day One Discharge Plan**-begin to identify barriers to remaining housed and strategies for overcoming them at the time of intake. At the time of intake the homeless person(s) meet with an Advocate for screening and needs assessment. Upon agreeing to participate, the person(s) and the Advocate work together to develop an individualized Action Plan. This plan identifies the person(s) housing and social services needs and the steps necessary to assist the person(s) in moving towards stability in permanent housing. The Advocate would then assist the person(s) in obtaining immediate shelter. The Advocate then assists the person(s) in relocating to affordable rental housing throughout Lenawee County. The homeless person(s) would be assisted in negotiating leases, accessing move-in funds and overcoming barriers of poor credit history, prior evictions, and discrimination based on ethnicity, family size, mental health, or income sources.
- **A trained Advocate makes sure the person(s) are linked with community resources** and advocates on their behalf and monitors the person(s) progress. Families will be supported as they reorient to stable living patterns and are linked with assistance with services which (teach) homemaking, nutrition, parenting education, money management, child care, job training, job placement and job retention. After initial, intensive contact, the focus will be to link the person(s) to mainstream programs and resources to meet their on-going and/or special needs. Trained mentors could be used to assist homeless person(s) through the application process.

- Explore ways to **create a mechanism for the care of children of incarcerated parents** by looking at plans from other communities. At the present time, many children are placed with friends or relatives with no legal provisions made for needs such as medical treatment, and education.
- **Explore options for unaccompanied youth:** CoC Homeless Youth Subcommittee will look at other community programs, legal issues, and will create a plan to be presented to the CoC by 2008. The CoC will review and implement the plan by 2009 and will review and update the plan yearly.
- **Research housing options for the elderly population:** “Despite the continued increase in the aging population and an increasing need for services, the number of nursing home beds available in Lenawee County has remained the same for more than 25 years. While some of the need for care has been met by the establishment of several assisted living facilities in the county, a majority of the increased need has been met by the provision of additional in-home services. Currently, several home health agencies provide home care assistance and the Lenawee County Department of Aging provides home delivered meals, personal care, homemaker services, medical transportation, and respite care. More than half of the funding for these services are provided by a .5 senior millage approved by county voters in 2002. Gerontology Network provides adult daycare to an increasing number of older persons at Daybreak. The Region 2 Area Agency on Aging manages the Medicare Waiver program that coordinates services for those needing a high level of care, enabling approximately 50 Lenawee County older persons to avoid pre-mature nursing home placements each year. The elderly population is expected to increase at about the same rate until around 2020 when the baby boomer generation begins turning 75. After 2020, drastic changes in the way services are provided for the elderly will become necessary.” Environmental Scan of Lenawee County, December 2003.
- **The CoC will support the efforts of the Re-Entry of Prisoners Program**, such as provide a representative to the local committee and write letters of support as needed.

*4. People who are homeless will be treated with respect, individual needs and choices will be affirmed and self-determination and autonomy will be promoted.*

- Utilize the strengths, experiences, and expertise of homeless and formerly homeless representatives in the creation and implementation of the Ten-Year Plan to End Homelessness. Leadership opportunities will be fostered as no one knows better than someone who has or is experiencing homelessness how to address the issues facing homeless persons.
- Create a community environment that promotes autonomy and self-determination and respect of homeless persons, even those who choose to remain un-housed.

*5. Prevention strategies should be utilized to overcome barriers to housing or remaining housed.*

**Prevention:** The Advisory Board To End Homelessness must focus on the prevention of homelessness. National statistics indicate homeless persons and families cost communities millions of dollars each year.

- 700,000-800,000 people are homeless on any given night;
- 2.5-3.5 million people will experience homelessness in a year;
- During a year 50 percent of the homeless are single adults, while 50 percent are families;
- Most families become homeless because of a housing crisis and are quickly re-housed if their financial situation is assisted;

- Families state they need assistance finding safe, decent, affordable housing and financial help to pay for housing-only 20 percent report they receive help with finding housing;
- Of those experiencing homelessness, 80 percent of single adults enter the homeless system one time and exit within 30 days and do not return;
- Nine percent of single adults enter homelessness five times and stay two months each time and use 18% of the system's resources;
- Homeless persons spend an average of four days longer in the hospital-costing \$2,414 per visit;
- Homeless persons are often in jail for petty crimes and can cost taxpayers thousands of dollars for frequent overnight stays;
- Shelters are normally used as short term crisis beds but, are more often turned into long term options which cost \$8,000 more per year than a regular Housing Choice Voucher (average cost of a shelter bed is \$26 per day or \$9,256 per year);
- The greatest loss, and the most difficult cost to quantify, is the loss of future productivity and health due to time spent in jail, hospital, shelter, crisis units and on the street.

Lenawee County reflects that trend with over one million dollars spent each year for homelessness services.

- **Hire and/or train Advocate(s) and/or Mentor(s):** to do outreach and to help guide homeless persons through the process of obtaining and keeping affordable housing. A trained Advocate makes sure the person(s) are linked with community resources and advocates on their behalf and monitors the person(s) progress. Families will be supported as they reorient to stable living patterns and are linked with assistance with services which (teach) homemaking, nutrition, parenting education, money management, child care, job training, job placement and job retention. After initial, intensive contact, the focus will be to link the person(s) to mainstream programs and resources to meet their on-going and/or special needs. Trained mentors could be used to assist homeless person(s) through the application process and more.
- **Close the Front Door-Prevention:** We must focus on the prevention of homelessness. The data shows that preventing homelessness is cost effective. The use of community-based behavioral health services aside, perhaps the most striking finding is the disproportionate use of homeless services, in-patient psychiatric services and emergency psychiatric services among the homeless.
- **Use prevention:** The Advisory Board will work to "Close the Front Door" to homelessness. We understand that we must reduce the number of people who become homeless through prevention and that we must strive to "Open the Back Door" or use intervention techniques to increase placement into supported housing of people who are currently experiencing homelessness. The Advisory Board will stop the "revolving door" of homeless persons being housed temporarily then turned out only to repeat the same process again. The Advisory Board will utilize Lenawee County's philosophy of Every Door is the Right Door to permit any and all agencies access to information and referral services that will be used for the homeless population.
- **Discharge Plan:** Advocate for a housing plan to be created prior to the time of discharge from correctional institutions, foster care, military, mental health facilities, or substance abuse facilities.

There are 2.5 million people incarcerated in the United States, 140,000 in federal prisons with the remaining in state or county facilities. Nationwide 10,300 prisoners are released each week. Of these 70% will return to prison within 3 years, unless they have taken their religion seriously, then the recidivism rate is only 10%. Source: Joseph Dulmage, Volunteers of America, and Director of Prisoner Aftercare.

*6. Outreach services should be provided to all people, even those who are labeled “difficult to reach.”*

- **Hire and/or train Advocate(s) and/or Mentor(s)** to do outreach and to build trust, provide referrals for basic needs, help guide homeless persons through the process of obtaining and keeping affordable housing.

- **Create Multi-Media, both high and low tech, access to housing information including but**

**not limited to:** a Website with links to providers or services to the homeless and links from area websites such as Lenawee County’s official website, include the universal initial intake form for them to either fill out and print or to read over to know what information they need at the initial intake. This would be accessible by using the Public Library computers. Yellow Pages advertisements, Notices of services available placed in Public places such as retail stores, local radio spots, newspaper ads, and billboards.

*7. Citizens of Lenawee County will assume an advocacy role in the Ten-Year Plan, changing policies and practices, supporting legislative changes, educating professionals, researching funding sources and collaborating with other stakeholders.*

While the CoC will have the responsibility for leading the Ten-Year plan’s implementation, commitment by the entire Lenawee County community to advancing the goals of the Plan is vital to its success. The Plan will not succeed and the goal of ending homelessness in or community will not become a reality- unless the entire community devotes the requisite human, financial and political resources to the cause.

- **Implement educational campaigns** to increase understanding and public awareness, reduce stigma associated with homelessness, and solicit countywide interest in the Ten-Year Plan to End Homelessness in Lenawee County.
- **Create and implement a Statement of Intent** in support of the Ten-Year Plan to End Homelessness from agencies, government, landlords, etc. Community leaders will be on board and “own” the plan as well as commit to implementation. Align government agencies to support implementation goals, appoint community champion(s) to build and sustain public-private partnership for successful Plan implementation.
- **Homeless Awareness Week** will be used annually to highlight endeavors to end homelessness in Lenawee County through multi-media avenues. Create and present the Norma Dell Courage to Care Award to be presented to local persons or entities that have provided exceptional services for the homeless. The CoC will present first award in November of 2006, then annually thereafter.

*8. Ongoing review and revision of the ideas and implementation of the Ten-Year Plan to End Homelessness in Lenawee County is necessary in order to keep the process and need in focus.*

- The CoC will annually review and update the Ten-Year Plan to End Homelessness.
- An aspect of the annual Homeless Awareness Week will be that the CoC will highlight the endeavors to end homelessness for the year.

# Lenawee County's Ten-Year Plan to End Homelessness

## Goals and Implementation

### Objective 1

*To increase the capacity to have current data of the homeless population in Lenawee County*

	Endeavor	Action Steps	Output
<b>1A</b>	“Point In Time Homeless Count” at least every 2 years.	<p>a. Develop a plan for the count by 10-15-06</p> <p>b. Implement “Point In Time” (PIT) count on 1-25-07.</p> <ul style="list-style-type: none"> <li>• Completed PIT &amp; 1<sup>st</sup> Project Homeless Connect (PHC) 1/25/2007.</li> <li>• 2nd PIT and PHC held January 2009. Turn out impacted by weather.</li> <li>• 3rd PHC held on 11/23/2009-low turnout due to parking issues at DHS.</li> </ul> <p>c. Compile and disseminate the data by 3-13-07</p> <ul style="list-style-type: none"> <li>• Results were reported in local newspaper 2/07.</li> <li>• January 2009 data reported.</li> <li>• Data reported at awareness and other events</li> </ul> <p>d. Repeat at least every 2 years thereafter Next count is January 2011</p>	To have current data of the homeless population in Lenawee County to be used to obtain grants, increase awareness, etc.
<b>1B</b>	Glean information from the Homeless Management Information System (HMIS)	<p>a. 100% of homeless service providers will participate by 2011</p> <ul style="list-style-type: none"> <li>• The Salvation Army joined in 2008</li> </ul> <p>b. Create a method to glean unduplicated information from HMIS data by 2011.</p> <ul style="list-style-type: none"> <li>• As of 2/2009, new System Administrator has reported data quarterly to COC.</li> <li>• Lenawee consistently receives high marks for data quality.</li> </ul>	To have an accurate, unduplicated count of homeless and services received in Lenawee County to be used to obtain

		<p>c. Compile the data and disseminate a report to appropriate entities yearly.</p> <ul style="list-style-type: none"><li>• Added data for PIT &amp; Project Homeless Connect 1/2007 &amp; created reports.</li><li>• 2009 data added 3/2009 and reports created.</li></ul>	<p>grants, and improve community</p>
--	--	---	--

## Objective 2

*All individuals and families should have permanent, safe, affordable housing.*

	Endeavor	Action Steps	Output
<b>2A</b>	Ensure an adequate supply of affordable housing	<p>a. COC will review existing data regarding housing supply in 2007 to develop a baseline.</p> <ul style="list-style-type: none"> <li>• <b>Baseline created in 2008</b></li> </ul> <p>b. COC will decide how many units are necessary to meet present and ongoing need for affordable housing by 2008</p> <ul style="list-style-type: none"> <li>• <b>Economy implodes and changes assessment in 2009.</b></li> </ul> <p>c. COC will explore options for increasing housing supply-ongoing:</p> <ul style="list-style-type: none"> <li>• <b>LHDC awarded funding for 7 units for Chronically Homeless 1/2007.</b></li> <li>• <b>Round 1 TBRA: FCCS funded for Youth, and LEAHC funded for Homeless Families</b></li> <li>• <b>FCCS added TH;</b></li> <li>• <b>LEAHC expanded TH program;</b></li> <li>• <b>FCCS began HARP for Lenawee;</b></li> <li>• <b>Round 2 TBRA-LEAHC funded for Homeless Families and Chronically Homeless.</b></li> </ul> <p>d. COC will secure funding opportunities for affordable housing-ongoing.</p> <ul style="list-style-type: none"> <li>• <b>LHDC awarded funding (\$500,000) for 7 units of housing for chronically homeless population in 2007; with units opening 4/2010 and named Legacy Housing Apartments;</b></li> <li>• <b>Round 1 TBRA: FCCS funded for Youth (\$100,000), and LEAHC funded for TBRA Homeless Family (\$50,000);</b></li> <li>• <b>FCCS added Transitional Housing (\$70,000)</b></li> <li>• <b>LEAHC expanded TH program by 1 unit;</b></li> <li>• <b>FCCS began HARP for Lenawee with 30 vouchers in 2008 and 25 in 2010;</b></li> <li>• <b>Round 2 TBRA-LEAHC funded for Homeless Families (\$38,000) and Chronically Homeless (\$78,000).</b></li> </ul>	100% of the population will have permanent, safe, affordable housing available in Lenawee County by 2017
<b>2B</b>	Mobilize resources of for profits, non-profits, government, faith-based entities.	<p>a. Brainstorm ideas.</p> <ul style="list-style-type: none"> <li>• <b>Brainstorming session held on 10/9/2007 to address new funding possibilities from Lenawee United Way. RFP's were written to support Outreach Worker (LEAHC awarded) and Coordinator for Ten-Year Plan (not awarded)</b></li> </ul>	100% of the population will have permanent, safe, affordable housing available in



		<p>b. Develop informational tools to assist in locating/obtaining housing 2007.</p> <ul style="list-style-type: none"> <li>• MICAH created assessment tools for TBRA; HARP; HPRP</li> <li>• Michigan Housing Locator</li> <li>• 211 became available in 2009</li> </ul> <p>c. Share tools with community agencies &amp; resources by 2008.</p> <ul style="list-style-type: none"> <li>• The Salvation Army began HMIS in 2008</li> <li>• 211 became available in 2009; usage of Email Blast</li> </ul>	<p>Lenawee County by 2017</p>
<p>2C</p>	<p>Assist homeless persons that are excluded from accessing housing.</p>	<p>a. COC will research &amp; address issues such as: mental illness, substance abuse, functional deficiencies, finances, evictions, domestic violence, criminal history, credit history, lack of employment skills, lack of education/illiterate, lack of identification or drivers license.</p> <ul style="list-style-type: none"> <li>• Lenawee County Mission opens shelter for men recovering from addiction; additional beds made available for homeless men in 2009</li> <li>• LEAHC expands family shelter program</li> <li>• FCCS begins TH</li> </ul> <p>b. COC will establish a baseline for the amount of exclusions in Lenawee County by 2011</p>	<p>Decrease the baseline of formerly homeless persons returning to homeless by 2017.</p>
<p>2D</p>	<p>Build on the existing network of problem-solving relationships among providers, funding sources, property owners, government entities and Advocates</p>	<p>a. Brainstorm ideas</p> <p>b. Identify information to be shared.</p> <p>c. Develop plans to share information at least</p> <ul style="list-style-type: none"> <li>• Monthly Daily Telegram article began in 2008</li> <li>• Worked with City Planning Commission on zoning ordinances for homeless shelter and homelessness</li> </ul>	<p>Expand network so clients will receive necessary services easily, property owners will know where to go for problem solving, &amp; government entities will be better informed</p>

### Objective 3

***Homeless individuals and families should receive safe, temporary shelter with planning for permanent housing that begins immediately by implementing multiple strategies as no one strategy can help all homeless persons***

	Endeavor	Action Steps	Output
<b>3A</b>	Housing First	<ul style="list-style-type: none"> <li>a. Create Intervention and Short term stabilization                             <ul style="list-style-type: none"> <li>• Lenawee United Way funded LEAHC outreach and CAA self-sufficiency programs. 2008, 2010.</li> <li>• AmeriCorps volunteer for FCCS and LEAHC added 9/2009.</li> <li>• HPRP begins in 9/2009</li> </ul> </li> <li>b. Provide screening, intake, &amp; needs assessment                             <ol style="list-style-type: none"> <li>1. Create a universal intake process/form</li> <li>2. Develop a "Homeless Persons' Needs Assessment Tool"                                     <ul style="list-style-type: none"> <li>• 2-1-1 central referral, LEAHC lead agency</li> <li>• LEAHC begins using assessment matrix in 2010</li> </ul> </li> </ol> </li> <li>c. Provide housing resource information.                             <ul style="list-style-type: none"> <li>• Created for TBRA (1/2007) and HARP.</li> <li>• Print out available in lobby's</li> </ul> </li> <li>d. Provide Case management.                             <ul style="list-style-type: none"> <li>• LEAHC, FCCS provide housing case management</li> </ul> </li> </ul>	100% of the population will have permanent, safe, affordable housing available in Lenawee County by 2017
<b>3B</b>	Advocate for improved follow up on persons discharged from shelters, homeless prevention programs, incarceration, mental institutions, hospitals and for newly homeless persons	<ul style="list-style-type: none"> <li>a. Develop the Day One Discharge Plan by 2007                             <ul style="list-style-type: none"> <li>• MPRI</li> <li>• Follow-up at LEAHC and FCCS</li> </ul> </li> <li>b. Train staff and volunteers on usage of Day one Discharge Plan 2008</li> <li>c. Implement by 2008                             <ul style="list-style-type: none"> <li>• SOAR Training completed in July 2008 with 19 front line staff trained and has proved successful</li> </ul> </li> </ul>	Decrease the number of formerly homeless persons returning to homeless
<b>3C</b>	Explore ways to create a mechanism for the care of children of incarcerated parents	<ul style="list-style-type: none"> <li>a. COC will research possible mechanisms by 2007 through the Homeless Youth Subcommittee of the COC.                             <ul style="list-style-type: none"> <li>• Research completed 1/2007.</li> </ul> </li> <li>b. The Homeless Youth Subcommittee will create a plan to submit to the COC by 2008.                             <ul style="list-style-type: none"> <li>• Plan completed 1/2007.</li> </ul> </li> <li>c. The COC will review and implement the plan by 2009.                             <ul style="list-style-type: none"> <li>• Plan implemented 3/2007. National Assoc. for Homeless Education has adopted our mechanism for incarcerated parents.</li> </ul> </li> <li>d. The COC will review the plan yearly</li> </ul>	Safe, legal care for children of incarcerated parents

<h1>3D</h1>	Explore options for unaccompanied youth	<p>a. COC will review other community programs, legal issues, etc.</p> <ul style="list-style-type: none"> <li>• Research completed 3/2007.</li> </ul>	Unaccompanied youth will have housing options in Lenawee County
		<p>b. Create a plan with options for unaccompanied youth by 2009.</p> <ul style="list-style-type: none"> <li>• Roadmap to Graduation (host families provide housing and support for students trying to complete graduation) created 3/2007.</li> <li>• Chief PO @ District Court to “create sentencing options rather than incarceration for unaccompanied student”; 4/2010</li> <li>• Goodwill begins Youth Employment Program in 2010</li> </ul>	
		<p>c. Implement the plan by 2010.</p> <ul style="list-style-type: none"> <li>• Roadmap to Graduation pilot funded 6/2007 and began 10/2007.</li> <li>• As of 2010, 19 students successfully graduated.</li> </ul>	

### **Objective 4**

***People who are homeless will be treated with respect, individual needs and choices will be affirmed and self-determination and autonomy will be promoted***

	<b>Endeavor</b>	<b>Action Steps</b>	<b>Output</b>
<b>4A</b>	Create community environment that promotes autonomy and self-determination and respect of homeless persons	<p>a. Partners will create community awareness curriculum by 2007.</p> <ul style="list-style-type: none"> <li>• Curriculum to be created in 2008.</li> </ul> <p>b. Partners will provide presentations to the community beginning in 2008.</p> <ul style="list-style-type: none"> <li>• Presentations &amp; monthly newspaper articles began 9/2007&amp; are ongoing.</li> <li>• Created new PR program: Story Sharers.</li> <li>• Worked with city on education of homelessness and city zoning on homeless shelters</li> <li>• Shared updated Ten-year Plan to City Planning Commission; 2009</li> </ul>	Increase community acceptance of homeless persons as indicated by their responses on the “Homeless Persons’ Assessment”
<b>4B</b>	We may have the goal of housing immediately, but some homeless persons are not ready for housing	<p>a. Partners will create community training curriculum that includes this information regarding outreach to homeless persons where they are residing by 2007.</p> <ul style="list-style-type: none"> <li>• Lenawee United Way funded LEAHC outreach and CAA self-sufficiency programs. 2008, 2010.</li> </ul> <p>b. Partners will provide presentations to the community beginning in 2008.</p> <ul style="list-style-type: none"> <li>• Ongoing.</li> </ul>	Increase community acceptance of homeless persons in alternative environments as indicated by their responses on the “Homeless Persons’ Assessment”

## Objective 5

***Prevention strategies should be utilized to overcome any and all barriers to housing or remaining housed.***

	Endeavor	Action Steps	Output
<b>5A</b>	Hire and/or train Advocate(s) and/or Mentors	a. Develop Advocacy/Mentor Program by 2008. <ul style="list-style-type: none"> <li>• Ogden Prison Ministries has 26 mentoring citizens. Service no longer available as of 2010.</li> <li>• Share the Warmth volunteers</li> <li>• AmeriCorps Member volunteers; 2008, 2009, 2010</li> </ul>	100% of the population will have permanent, safe, affordable housing available in Lenawee County by 2017
		b. Recruit/hire by 2009. <ul style="list-style-type: none"> <li>• NAMI began operations in Lenawee in 2008. No longer available as of 2009.</li> </ul>	
<b>5B</b>	Close the Front Door & Open the Back Door	a. Create Inventory of Prevention Services & Resources. <ul style="list-style-type: none"> <li>• Lenawee United Way funded LEAHC outreach and CAA self-sufficiency programs. 2008, 2010.</li> <li>• AmeriCorps Member volunteers; 2008, 2009, 2010</li> </ul>	100% of the population will have permanent, safe, affordable housing available in Lenawee County by 2017
		b. Use all available agencies and media to promote. <ul style="list-style-type: none"> <li>• 2-1-1 began 2009.</li> </ul>	
<b>5C</b>	Day One Discharge Plan	a. Develop Day One Discharge Plan by 2008. <ul style="list-style-type: none"> <li>• This needs to be revised based on statewide data.</li> </ul>	100% of the population will have permanent, safe, affordable housing available in Lenawee County by 2017

**Objective 6**

***Outreach services should be provided to all people, even those who are labeled “difficult to reach.”***

	<b>Endeavor</b>	<b>Action Steps</b>	<b>Output</b>
<b>6A</b>	Hire Advocate(s) and/or Mentors Obtain and train volunteers and/or peer mentors	a. Develop Advocacy/Mentor Program by 2008. <ul style="list-style-type: none"> <li>• Lenawee United Way funded LEAHC outreach and CAA self-sufficiency programs. 2008, 2010.</li> <li>• Share the Warmth volunteers</li> <li>• AmeriCorps Member volunteers, 2008,2009,2010</li> </ul>	100% of the population will have permanent, safe, affordable housing available in Lenawee County by 2017
		b. Recruit/hire by 2009. <ul style="list-style-type: none"> <li>• Completed 6-08 by LEAHC and CAA.</li> </ul>	
<b>6B</b>	Create Multi-Media access to housing information.	a. Brainstorm ideas for effective media use. <ul style="list-style-type: none"> <li>• Added information to Lenawee County website.</li> <li>• Added information to the Lenawee United Way website.</li> </ul>	100% of the population will have permanent, safe, affordable housing available in Lenawee County by 2017
		b. Create plan by 2009. <ul style="list-style-type: none"> <li>• Michigan Housing Locator</li> <li>Local resources in lobby’s</li> </ul>	

**Objective 7**

***Ongoing review and revision of the ideas and implementation of the Ten-Year Plan is necessary in order to keep the need in focus.***

	<b>Endeavor</b>	<b>Action Steps</b>	<b>Output</b>
<b>7A</b>	Yearly update of the 10 Year Plan	a. The COC will review the plan yearly and make recommendations for updates. <ul style="list-style-type: none"><li>• Update took place in August 2007, 2008, 2009 and June/July 2010.</li></ul>	To ensure that the Ten-Year Plan to End Homelessness is in line with what is needed by the community
		b. Changes to the plan will be made as necessary. <ul style="list-style-type: none"><li>• Ongoing</li><li>• Reported to funders and community</li></ul>	

### Objective 8

*All citizens of Lenawee County should assume an advocacy role in the Ten-Year Plan, changing policies and practices, supporting legislative changes, educating professionals, researching funding sources and collaborating with other stakeholders.*

	Endeavor	Action Steps	Output
<b>8A</b>	Educational campaigns	a. Create an educational campaign by 2008 <ul style="list-style-type: none"> <li>• Lenawee United Way request denied for support for COC.</li> <li>• Campaign consists of: Story Sharers, Homeless Awareness Week/Month Activities, Homeless Education Conference, Project Homeless Connect, City and County governments</li> <li>• CoC worked with City Planning Commission on updating zoning ordinances related to homeless shelters and homelessness</li> <li>• Awarded the Hometown Hope media campaign grant in 2009 and 2010 and used for Homeless Awareness Month (November)</li> </ul>	The community will be focused on ending homelessness in the next 10 years and beyond
		b. Implement campaign by 2009 <ul style="list-style-type: none"> <li>• Ongoing</li> </ul>	
<b>8B</b>	Create and implement a Statement of Intent	a. Create "Statement of Intent" by 2008 CoC MOU developed for members	The community will be focused on ending homelessness in the next 10 years and beyond
		b. Present "Statement of Intent" to agencies, government and landlords by 2009 CoC MOU implemented for members in 2008	
		c. Obtain signatures as necessary	