



Lenawee Community Mental Health Authority

2007 Board Members: Judy Ackley, Board Chair, Richard Bailey, Debra Bills, Secretary, Linda Feeney, Mark Jackson, Howard Keller, Emily Martinez, Grace Miley, Vice-Chair, Nate Smith, Jim VanDoren, Bob Wilson, William Zimmerman

2007 Annual Report

Community Members and Partners

The Lenawee Community Mental Health Authority Board is pleased to present its FY 2007 Annual Report to the community.

We value and are thankful for our partnership with consumers, staff, board members and area community organizations in our effort to provide quality, efficient and effective community-based services in Lenawee County. These partnerships, along with our membership in the Community Mental Health Partnership of Southeastern Michigan, are critical to our success.

While this report provides service and budget highlights for the year, we take our greatest pride in the successes of our consumers in their journey of recovery and congratulate each one of them for their great achievements.

We hope you find our report this year interesting and informative. As always, we welcome your comments and suggestions at any time. Please call our Customer Services at 263-8905 or visit our website at www.lcmha.org.

Sincerely,

Judy Ackley
Board Chairperson

Roger Myers
Executive Director .

**LCMHA Board Meetings are held the last Thursday of every month at 3:00 p.m. at
1040 S. Winter St. Suite 1022, Adrian, MI 49221**

Noteworthy Happenings



Seven individuals were trained as Peer Support Specialists.

LCMHA partnered with Community Mental Health Partnership of Southeastern Michigan (Affiliation) for the Fifth Annual Sharing Hope Conference. LCMHA Board Member, Bob Wilson was one of the Keynote speakers. Consumer art was featured at the Affiliation Art Show.

The Lenawee Suicide Prevention Workgroup was established and chaired by LCMHA staff. This group expanded to include over 80 community members representing over 50 different organizations and individuals. They developed a Suicide Prevention Work Plan that was approved by the Lenawee Community Collaborative.

The Garrett Lee Smith Youth Suicide Prevention Grant was received for one year and renewed for a second to increase community awareness and provide training.



The Lori Sallows Anti Stigma Award was presented to Diane Ballingall.

Jim Thompson and Mary Scheich emceed the Walk A Mile in My Shoes Rally held in Lansing.

Lenawee Safe Kids, co-chaired by Kay Ross, checked car seats throughout Lenawee County, 94% of seats checked are improperly installed.



Bill and Barbara Ross express their appreciation for personal care professionals through the Brenda Ross Funds (Lenawee Community Foundation). The fund is being used annually to train and educate direct support professionals who work with persons who are physically and mentally impaired.



Participated in a number of health fairs and community events including the "Reaching for the Stars" booth at the Lenawee County Fair.

Staff, families, and friends participate in the Adopt A Highway program to pickup debris from over two miles of local highway.

95 first responders, parents and other community members attended two presentations on Autism and Other Disabilities with Dennis Debbaudt at Siena Heights University.



A Mental Health Awareness Celebration was held at LCMHA with keynote speaker, Rob Grimes.

140 community members participate in a Yellow Ribbon Suicide Prevention Gatekeeper training at Vo-Tech



Staff participated in the Workers on Wheels fundraiser at Garfield's

The State Public Relations Committee, made up of representatives from all the CMH's in the state had an Art Contest for each Affiliation in the state. Our own Pat Baier-Hay won our Affiliation contest and her painting will be touring the State of Michigan for the next 2 years.



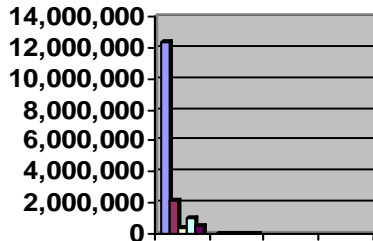
The Personal Emergency Response System (PERS) monitor system was presented as an alternative to full-time in home staff for people with disabilities thereby providing them an opportunity for greater independence.

Received an official letter from the Joint Commission that our Measure of Success was accepted. The Accreditation Cycle effective August 23, 2007 is valid up to 39 months.

2006–2007

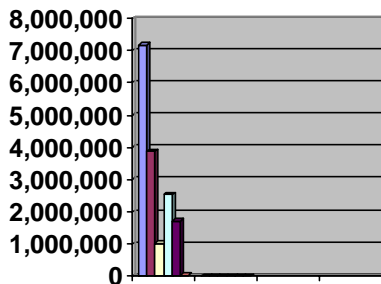
fiscal year

Where Your Money Came From (LCMHA Revenue):



Medicaid	\$12,389,104	75.8%
State Funds	2,183,847	13.4%
County Funds	365,686	2.2%
Block Grant/Other Local	969,198	6.0%
Contract Agency Match, Interest, Fees	439,554	2.6%
TOTAL	\$16,347,389	100%

How Your Money Was Spent (LCMHA Expenditure):



Inpatient / Residential Care	\$7,182,926	43.9%
Adult Services	3,871,331	23.7%
Children's Services	1,019,622	6.2%
DD Services	2,543,392	15.6%
Administration / Support	1,709,193	10.5%
Prevention	20,925	0.1%
TOTAL	\$16,347,389	100%

CAFAS AWARD

LCMHA won an award in recognition of performance that was better than the state benchmarks on all indicators.

Indicators included:

- Clinically meaningful reduction in total CAFAS score
- No severe impairment at exit
- Not SED (severely emotionally disturbed) at exit

LCMHA served 2,068 Lenawee County residents during fiscal year 2007.

Population/Program	Number Served	Percentage
Adults with Mental Illness	1460	70.6%
Children with Mental Illness	345	16.7%
Persons with Developmental Disability	<u>263</u>	<u>12.7%</u>
TOTAL	2068	100%

CAFAS, Child and Adolescent Functional Assessment Scales—measure of behavior at home, school, and community. The CAFAS scores help determine eligibility for services and guide clinicians in recommendations for services. A reduction in CAFAS scores indicates a significant improvement in the child or adolescent's behavior.

- Youth who had reduction in total CAFAS Score from Intake to Exit of 20 or more points:
LCMHA = 85.71% Michigan = 64.71%
- Youth who had one (1) severe impairment at time of Intake and zero (0) severe impairment at Exit:
LCMHA = 100% Michigan = 48%

Comparison of LCMHA Performance against both Michigan and National Norms

- Number of days between Request for Initial Services and scheduled date of appointment—Adult:
LCMHA = 4.09 days Michigan = 8.0 days National = 8.85 days
- Number of days between Request for Initial Services and scheduled date of appointment—Child:
LCMHA = 5.74 days Michigan = 8.05 days National = 9.10 days



LCMHA's Mission: Our mission is to promote positive outcomes through quality mental health services.

Community Mental Health Partnership of Southeastern Michigan's (CMHPSM) Mission: To provide quality behavioral health care that promotes recovery and wellness, fosters resilience and supports self determination and empowerment so that individuals served in our four-county affiliation are successful in achieving their personal goals and dreams.



VALUES:

- Respect the diversity of our communities and the people we serve
-
- Zero Tolerance for stigma
-
- Coordinated and continuous care between and across healthcare systems and providers
-
- Meaningful partnerships with consumers and community stakeholders
-
- Learning organization disciplines of systems thinking, team learning, shared vision, personal mastery, and mental models
-
- Data based decision making
-
- Innovation and creativity
-
- Provide the best quality services to the most people at the best cost.

Lenawee Community Mental Health Authority
1040 S. Winter St. Suite 1022
Adrian, MI 49221

PRSR STD
U.S. Postage
PAID
Adrian, MI.
Permit No. 127